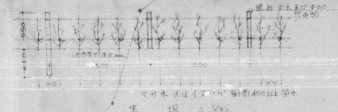


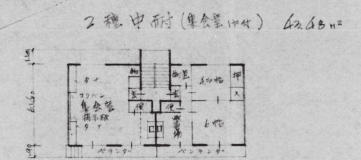
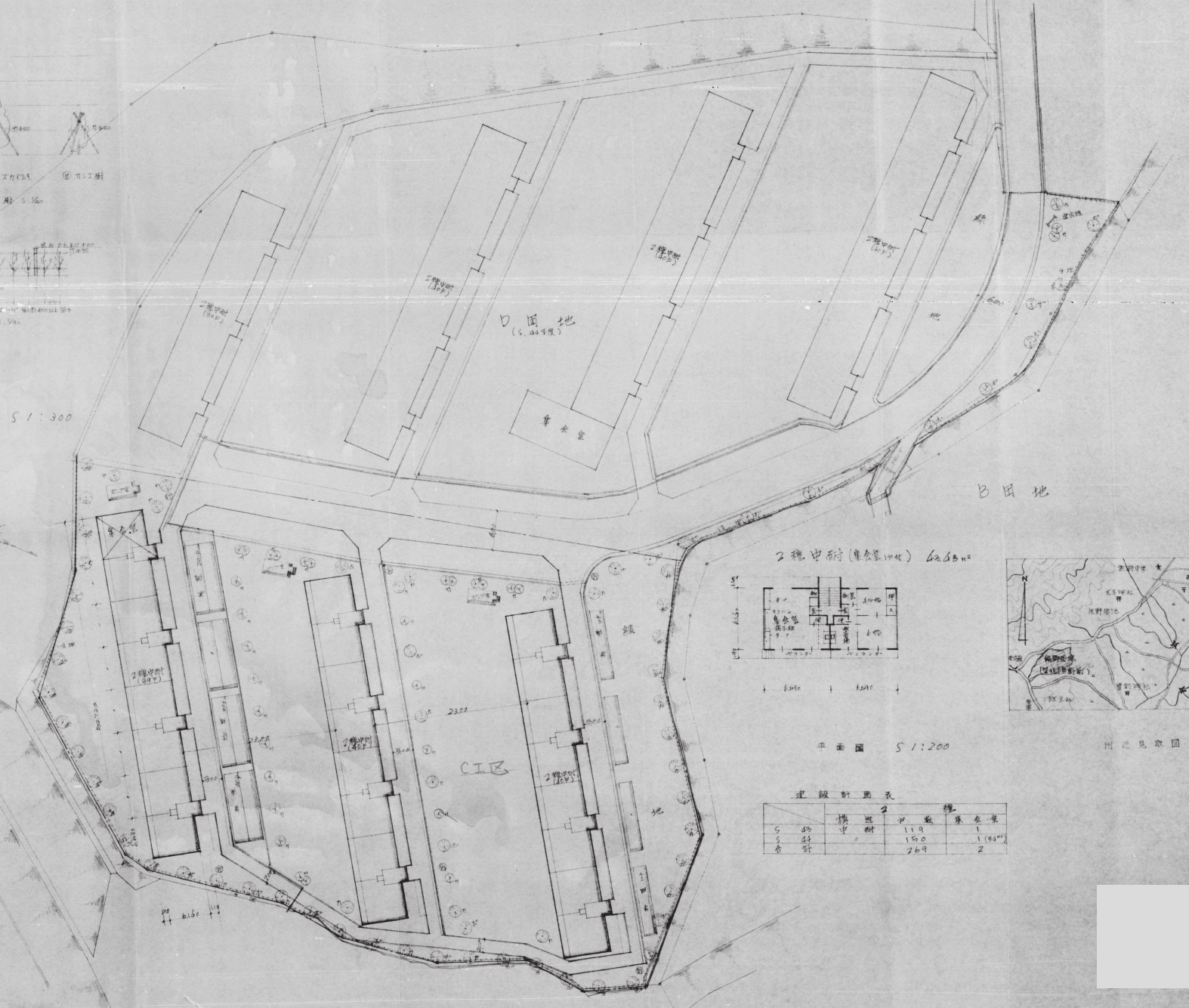
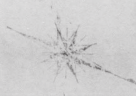
① 木アラス ② カシガハス ③ 有刺樹

植 栽 規 模 1:100



植栽高さ 500
植栽間隔 300
植栽規格 1:100

配 置 図 S 1:300



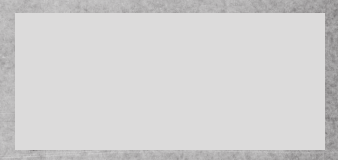
平面図 S 1:200

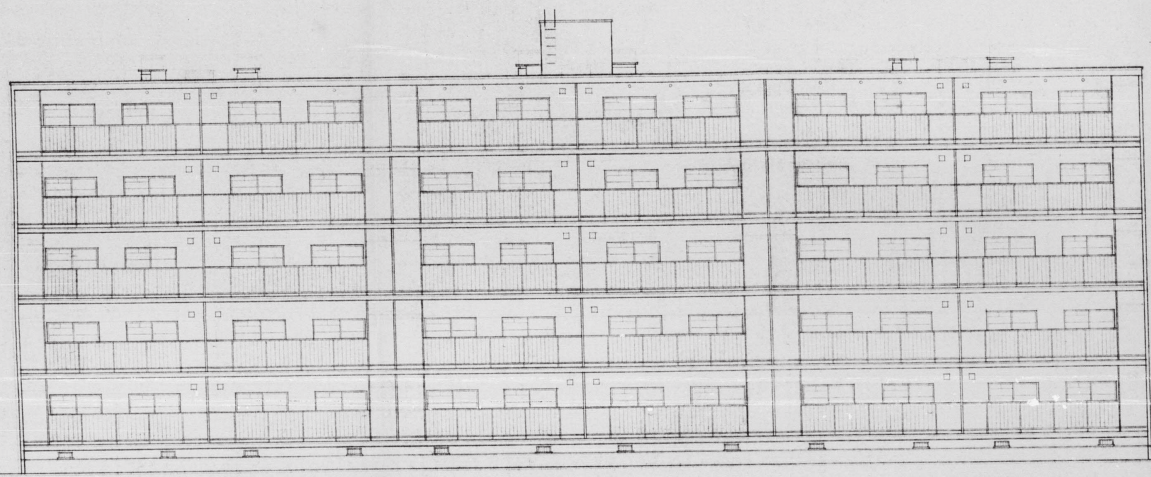


附近見取図

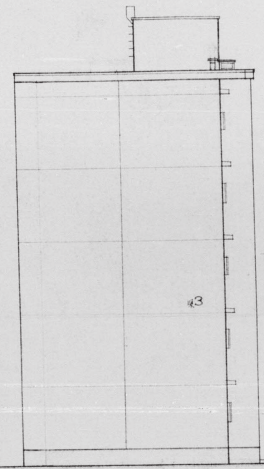
建設計画表

種	棟	戸数	床面積
S	60	119	1 (84坪)
S	特	150	1 (84坪)
合	計	269	2

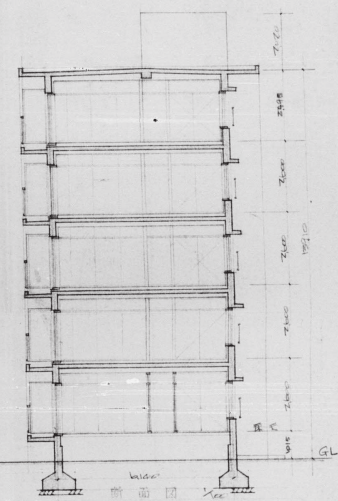




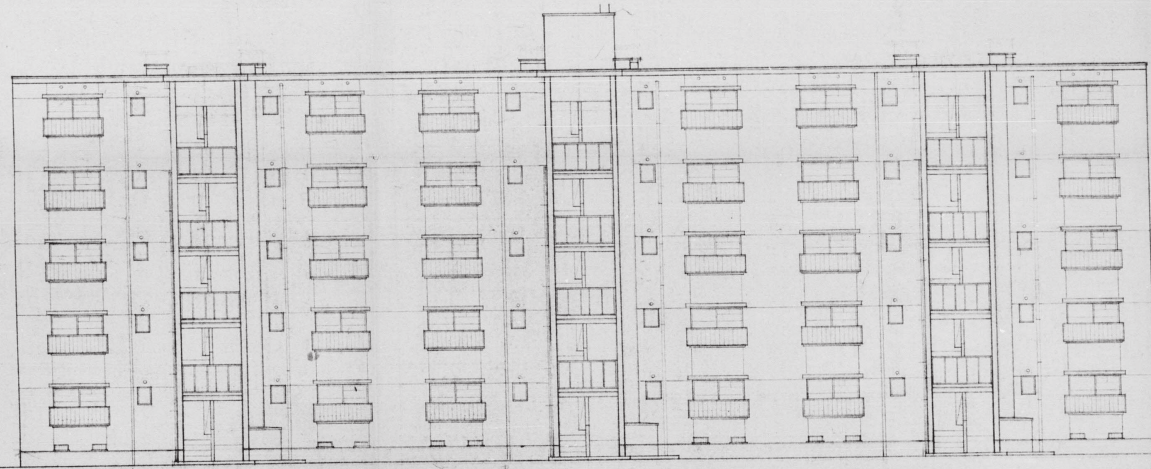
南立面图 Xcc



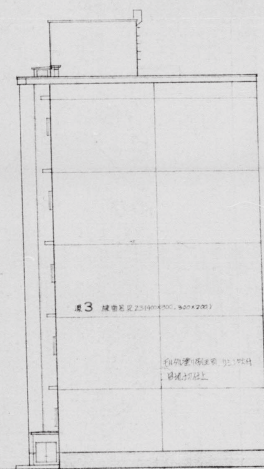
东立面图 Xcc



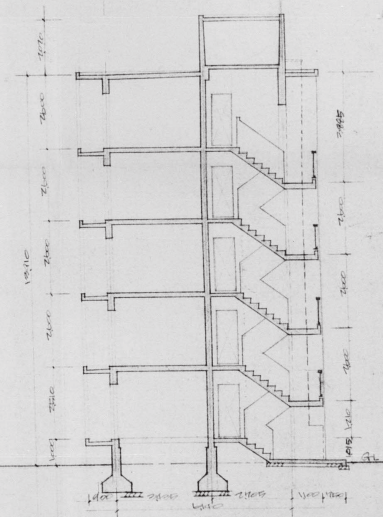
前剖面图 Xcc



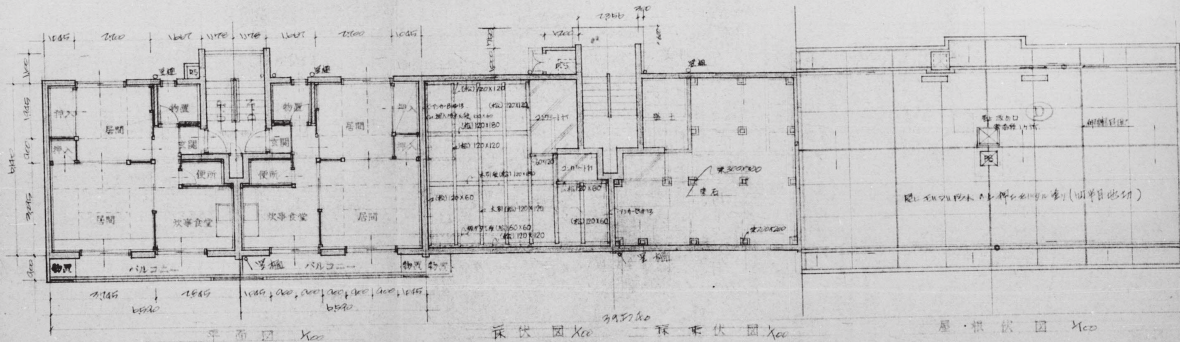
北立面图 Xcc



西立面图 Xcc



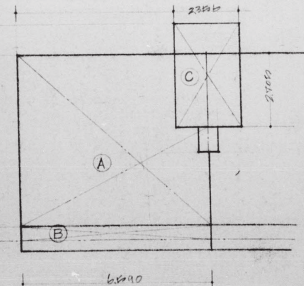
后剖面图 Xcc



平面图 Xcc

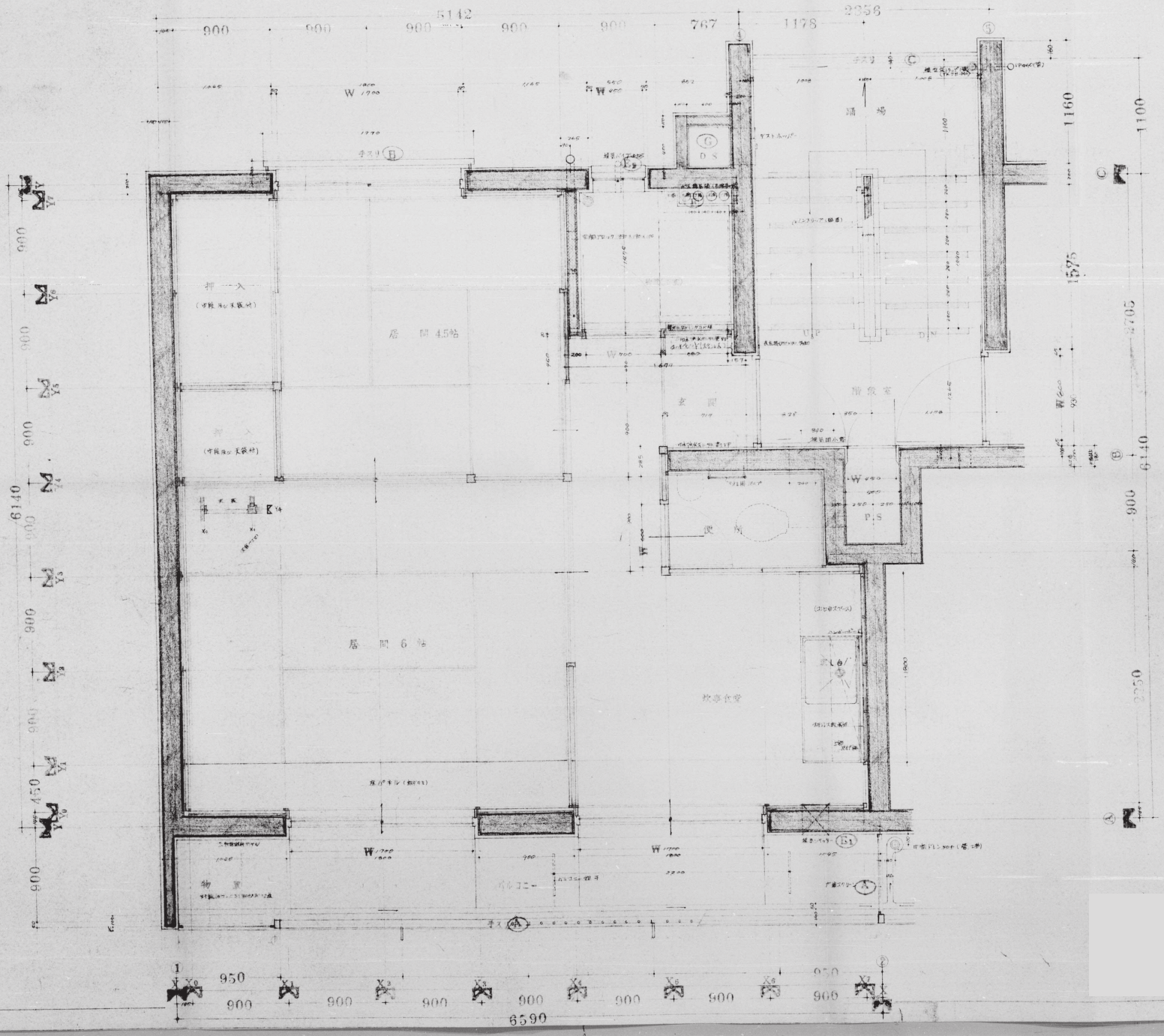
居住园 Xcc

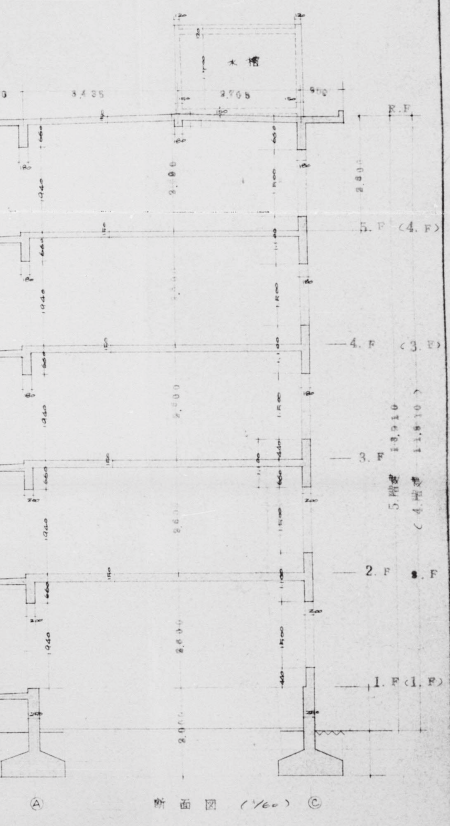
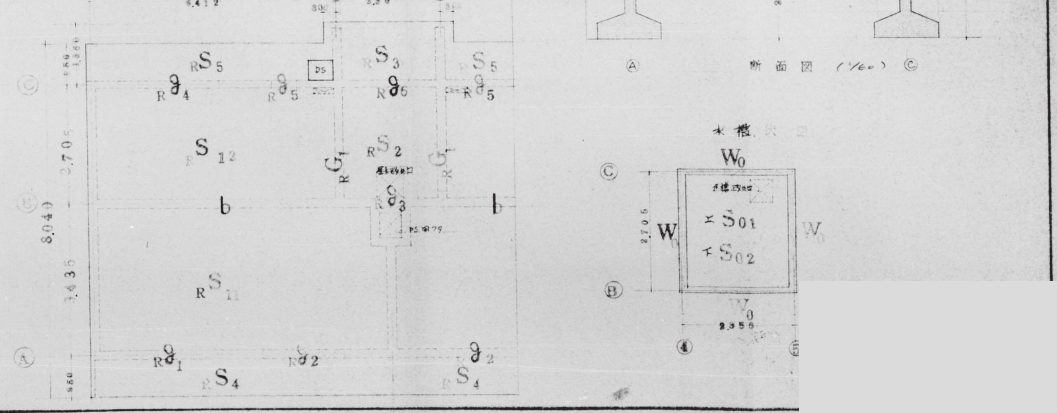
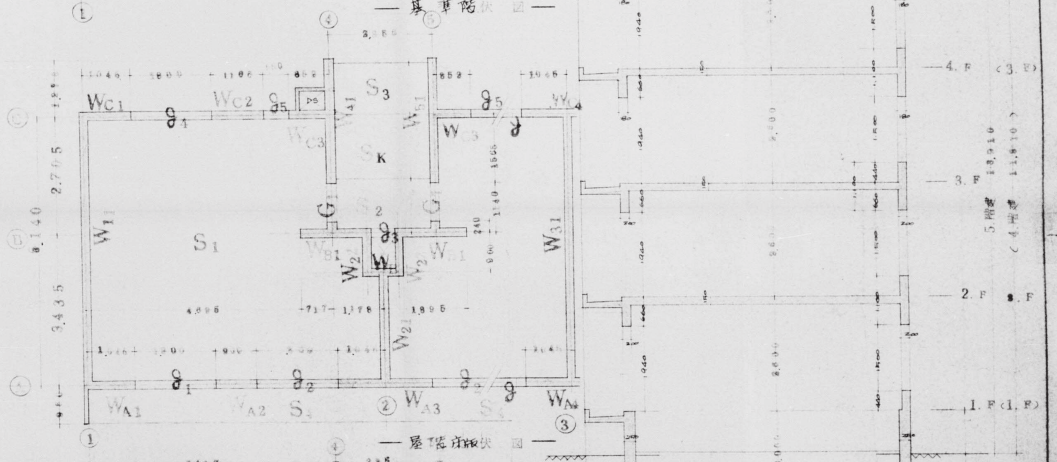
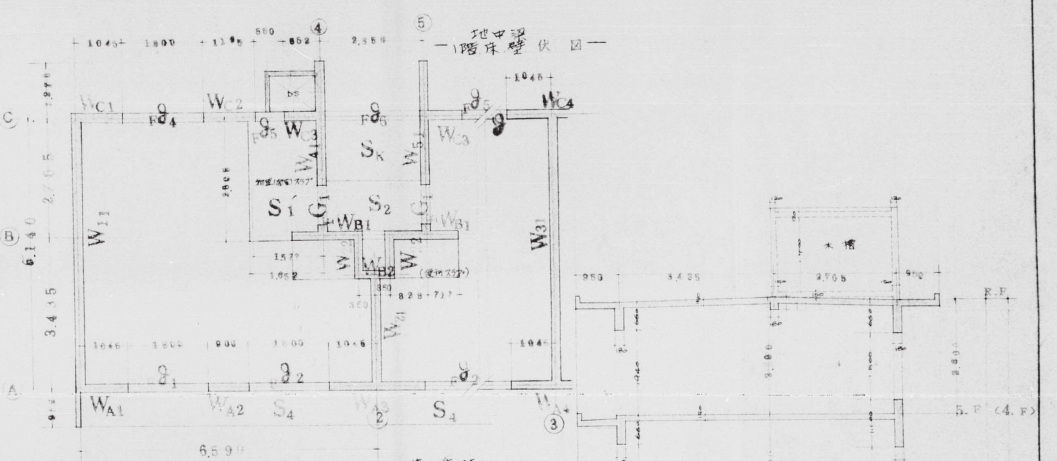
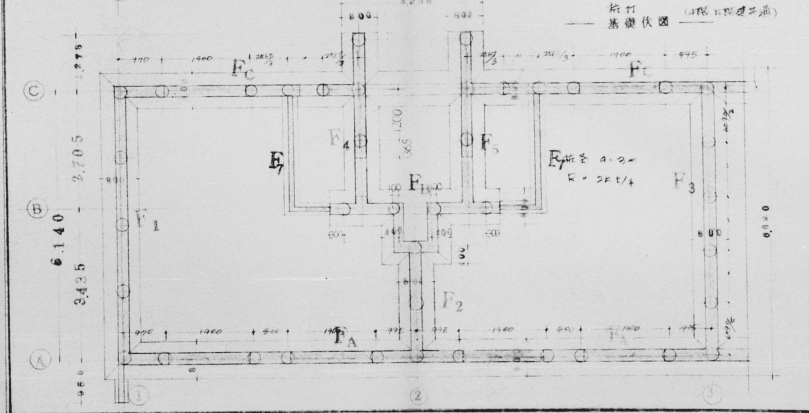
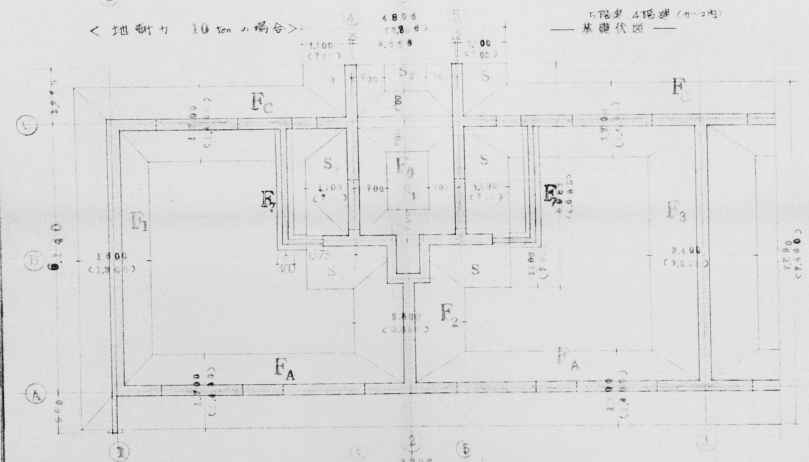
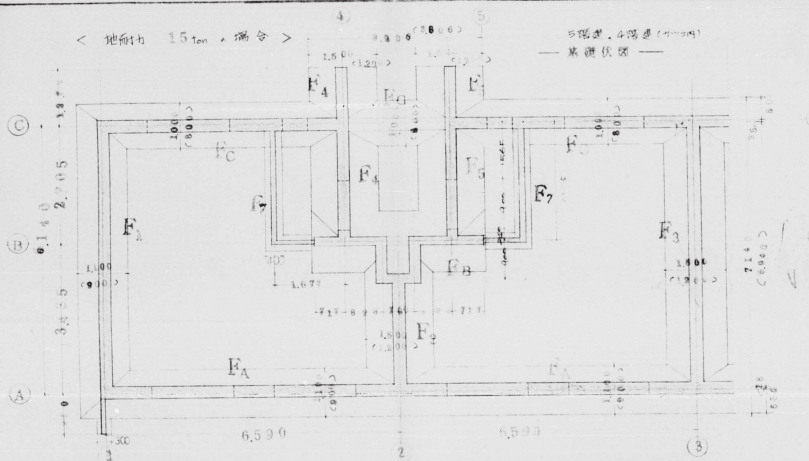
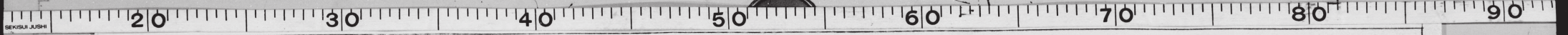
居住园 Xcc



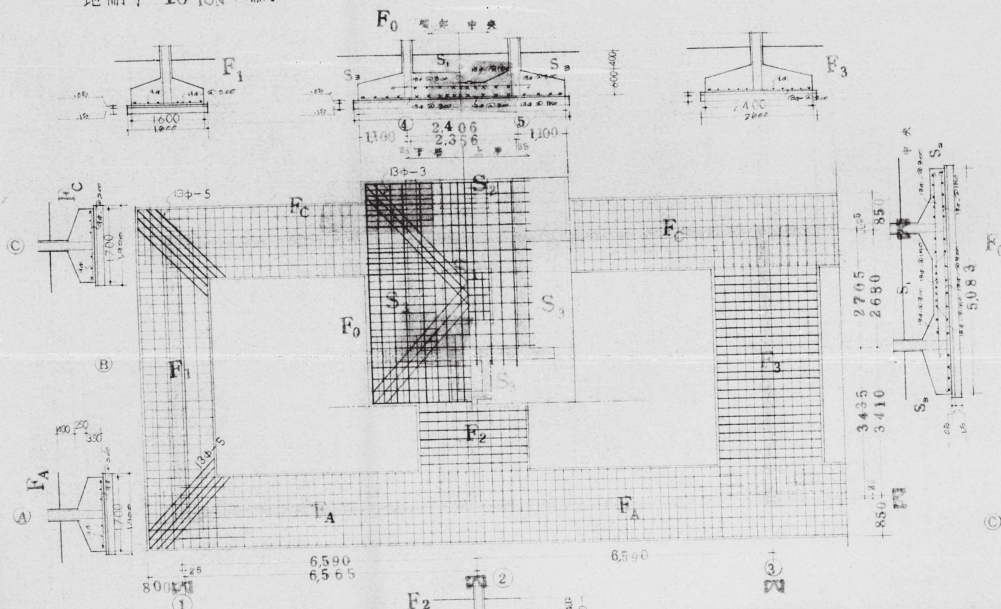
1/4剖面图 Xcc

1/4剖面图
 楼层剖面
 $A = (6090 \times 2350) - (2700 \times 2350 \times 1/2) = 972960$
 $B = (6090 \times 2350) = 1431150$
 $C = 1431150 - 972960 = 458190$
 共同部分
 $C = 458190 + 2350 \times (2700 \times 1/2) = 458190 + 315750 = 773940$





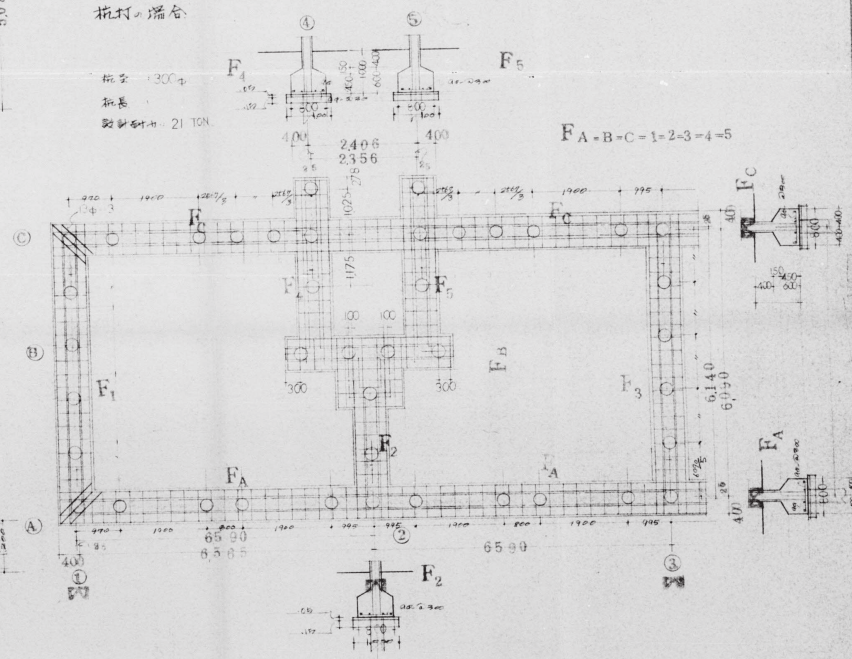
地耐力 10 TON の場合



5階建基礎配筋図 (5/160)

杭打の都合

杭径 300
杭長
鋼管杭 21 TON



地耐力 15 TON の場合

